

Evogen ONE™ Buccal Protocol

One Tube, One Reagent, One Step



Evogen ONE simplifies your sample prep and reduces your impact on the environment.

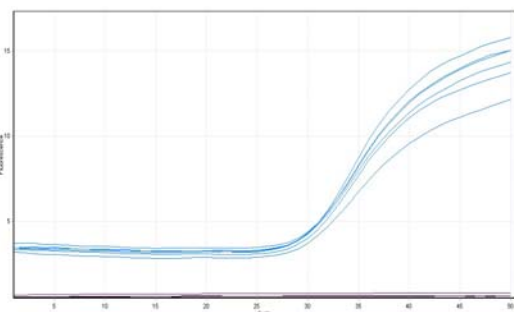
Evogen's ONE is a single reagent system designed to lyse a variety of cell types and capture PCR-ready DNA in approximately 25 minutes from start to finish. ONE is simple, easy to use, and cost effective.

ONE can be used with multiple sample types, including bacterial cultures and isolates, as well as environmental, agricultural, food, and diagnostic samples.

Buccal Procedure

PCR-ready lysate is prepared using a simple procedure.

1. After taking sample place tip of swab in a 1.7mL microtube.
2. Add 100µL of Evogen ONE.
3. Vortex gently.
4. Heat at 95°C for 2 minutes.
5. Centrifuge on high for 2 minutes.
6. Supernatant containing the DNA template is ready for PCR.



Typically, 1 - 10 µL of the lysate supernatant can be used in a 25 µL PCR reaction. However, the optimum amount should be determined empirically, depending on the expected DNA concentration, starting sample size, and sample composition.

Key Benefits

Template DNA from human buccal samples was extracted using the Evogen ONE buccal sample protocol. Samples were amplified for a segment of the human beta globin gene using SYBR® green. Real time data shows consistent and unhindered amplification of each sample, shown in blue. Negative controls are visible in black.

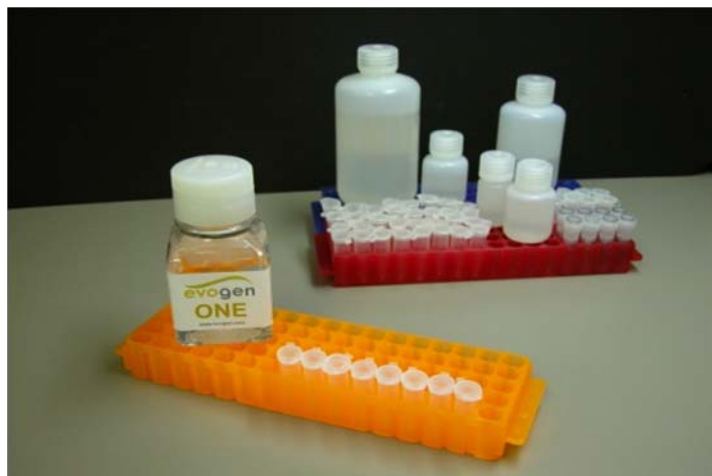
- Cost-effective
- Simple to use - One reagent, one tube
- Rapid - PCR ready DNA in 25 minutes
- Robust - add lysate to PCR at up to 40% total volume
- Versatile - Same procedure for gram positive and gram negative bacteria, blood, yeast, and tissues
- Environmentally friendly - less waste than competitive products

Additional protocols available at:

www.evogen.com/products/evogen_one.html



Comparative Information*



	Evogen ONE	Chemagen	MoBio	IT DNA 123
Number of preps per	300	100	250	40
Cost per Sample	\$0.67	\$1.69	\$1.90	\$4.48
Average Time for 8 Samples (experienced user)	22 minutes	36 minutes	1 hour 14 minutes	37 minutes
Number of Pipette Steps (8 samples)	32	104	96	64
Average Yield	0.90ng/μL	0.41ng/μL	0.38ng/μL	0.30ng/μL
Amount of Starting Material	50-200μL (depending on sample concentration)	200μL	Protocol states 1.8ml of sample per prep	average is 100μL (varies depending upon sample type)
Amount of Ending Material	100μL	100μL	50μL	200μL
Additional Equipment & Disposables	Microtubes, 95°C heat block, microcentrifuge, pipettes	Magnetic bead separator tray, 55°C heat block, microcentrifuge, pipettes, microtubes	Flat bed adaptor for vortexer, Microcentrifuge, refrigerator, pipettes	Genie disruptor, Microcentrifuge, Pipettes
Consumables included in Kit	1 bottle	7 bottles	6 bottles, bead tubes (50), microtubes (200), spinfilter tubes (50)	3 bottles, swabs, pipettes, bead tubes (40), spinfilter tubes (40), microtubes (120)

* Comparative information based on a gram negative bacterial DNA extraction.



8301 State Line Road, Suite 101 ● Kansas City, MO 64114 ● Toll-free: 888-450-4321 ● Office: 816-360-3895 ● Fax: 816-931-2451